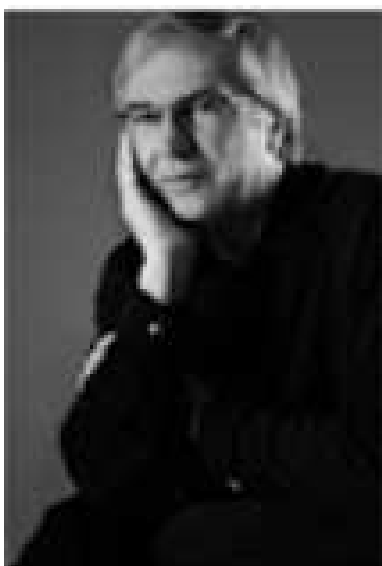




## MAN Series Office system

Linia Man została stworzona przez najlepszych europejskich projektantów



**Eckhart Huser**  
Nagrodzony wieloma nagrodami włącznie z "Red dot" i prestiżowym "if award". Eckhart Huser specjalizuje się w wzornictwie mebli, a szczególnie w kreowaniu trendów zarówno kształtów, jak i kolorów.

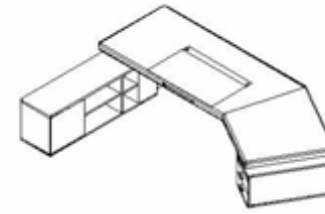


**Joerg Dietz**  
Posiada wieloletnie doświadczenie w współpracy z europejskimi producentami mebli biurowych. Specjalizuje się w projektowaniu konstrukcji i ergonomii mebli z nowoczesnych materiałów.





CHAIRMAN



M87  
2800x1050x760

Biurko Man



Schowane gniazdko multimedialne



Przesuwana boczna komoda



Drewniana obudowa na komputer



Dużo miejsca w schowkach i szafkach



Stół Blumberg M70



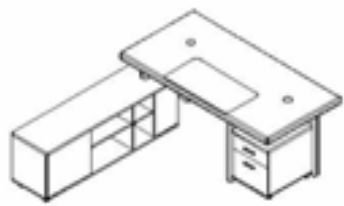
Biurko Blumberg M82



CHAIRMAN



Biurko Lava



M82  
2400x1050x760



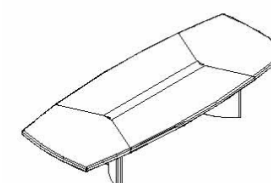
M83  
2000x1000x760



M89  
1600x800x760  
1800x900x760



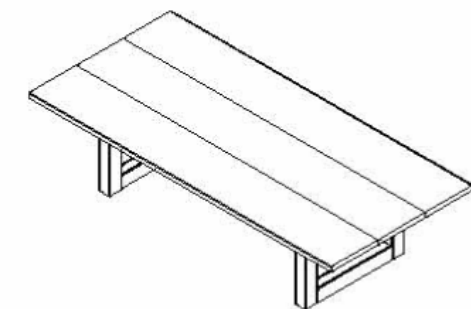
Stół konferencyjny Holland M72



2400x1200x760, 3200x1600x760  
4000x1600x760, 5000x1800x760  
6000x2000x760



MV71



3200x1500x760



**M99**  
2049x400x2000

**MG96**  
2451x400x2000

**M93**  
1647x400x2000

**MG92**  
1647x400x2000



**MG98**  
3254x400x2000

## Forniry



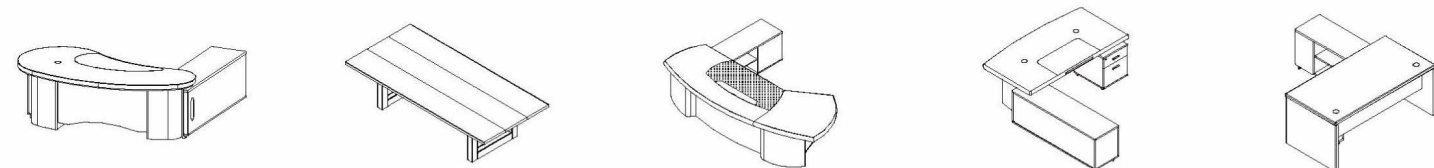
W2A Orzech/wiśnia    W2B Orzech mat    W3A Orzech    W3B Orzech mat    W4A Wiśnia



W5A Wisnia    W6A Ciemny Teak    W7A Klon    W8A Buk    W9B Dąb mat



W10A Mahoń



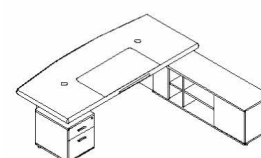
**MR83**  
2400x1200x760

**MV71**  
3200x1500x760

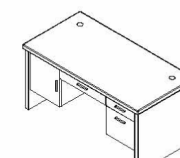
**M88**  
3200x1510x760

**M85**  
2000x1050x760

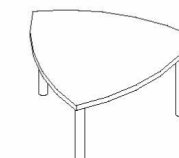
**M83**  
1800x900x760



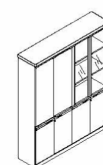
**M82**  
2400x1050x760



**M89**  
1600x800x760



**M70**  
1400x1400x760



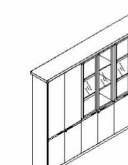
**MG92**  
1647x400x2000



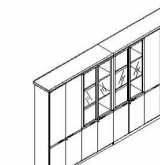
**MG93**  
843x400x750



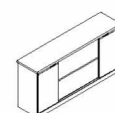
**MG95**  
1245x400x2000



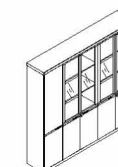
**MG96**  
2451x400x2000



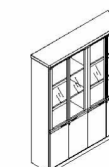
**MG98**  
3284x400x2000



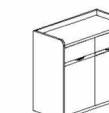
**M97**  
1647x400x744



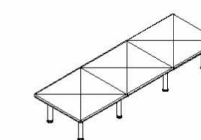
**M99**  
2049x400x2000



**M93**  
1647x400x2000



**MG91**  
844x400x800



**MG72**  
4550x1550x760  
5450x1850x760  
7250x1850x760



Obsługi Klienta  
Tel. 602 618 216  
Email: bok@chairman.pl